



DME API. Real Time Example with Web Application Using Web Service

This example shows how DME API can be used in Web applications. This case is the most justified for using WCF Service.

1. For starting, please check 'Start WCF Service Host...' checkbox in SampleService project's settings 'WCF Options' tab, how it is shown in Fig.1

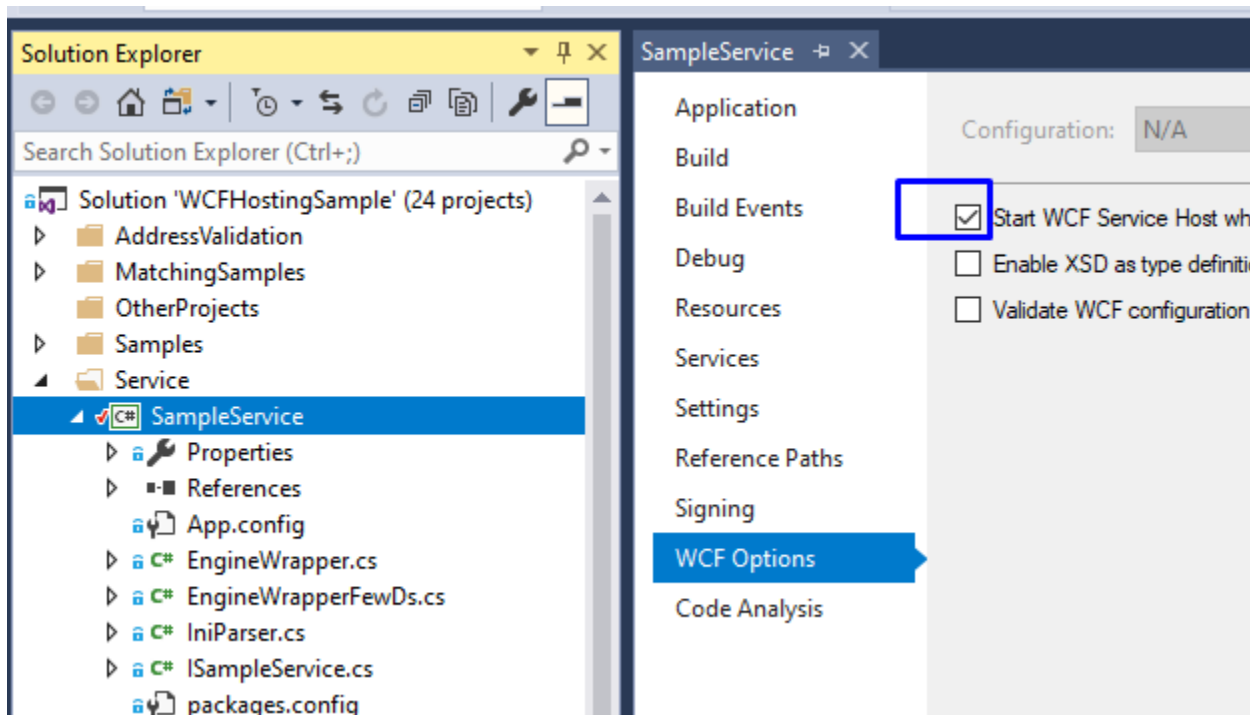


Fig.1. Settings of SampleService project

2. Check that WCF service addresses are the same in SampleService and WebApplicationUsingWebService projects (Fig.2 and Fig.3).

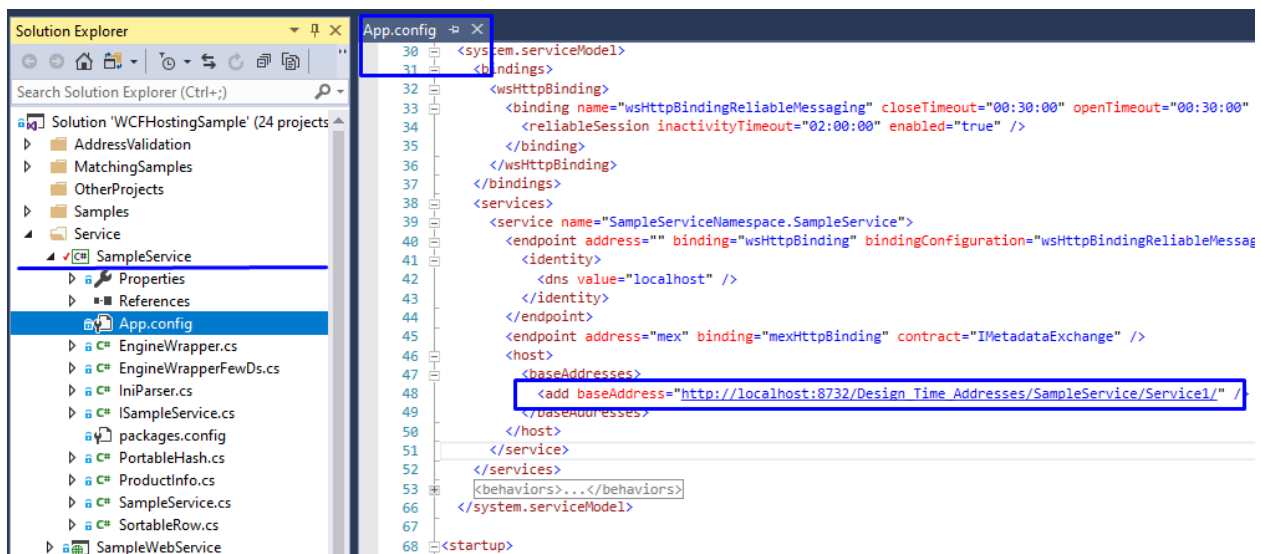


Fig.2. App.config file of SampleService project

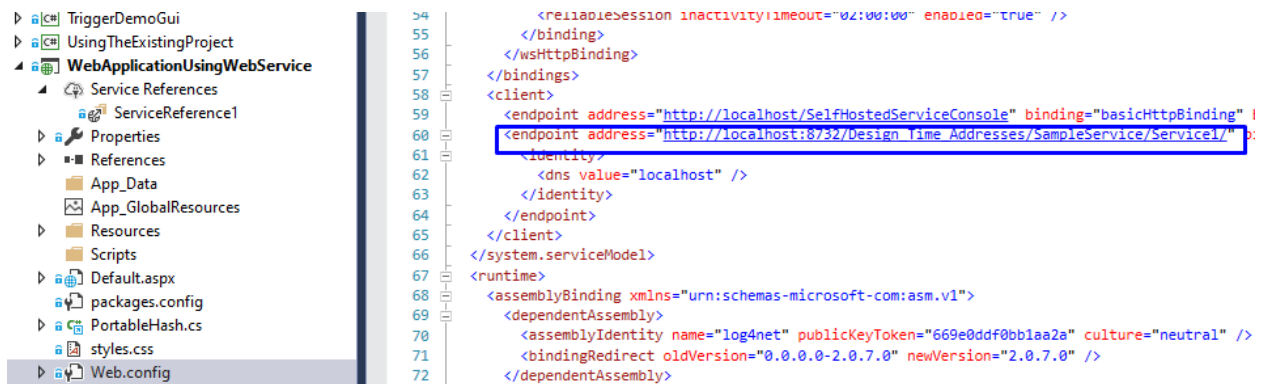


Fig.3. Web.config file of WebApplicationUsingWebService project

3. Create project in DataMatch Enterprise with source from SQLServer source. Create definition and add criteria. Save and close project.
4. Select 'WebApplicationUsingWebService' project in Visual Studio and start it. Start 'WebApplicationUsingWebService' project. If everything adjusted correctly you can see browser window how it's shown in Fig.5

If exception happens during starting WCF service, please execute script from "D:\API\Samples\elevate rights for the web service" folder. This script should be adjusted with correct DOMAIN and UserName. All corrections details are in Fig.4.

Please execute this script as administrator. Start WebApplicationUsingWebService project

```
#rem please enter correct DOMAIN and username and run this script as administrator
#rem netsh http add urlacl url=http://+:80/SelfHostedServiceConsole user=DOMAIN\user

netsh http add urlacl url=http://+:80/SelfHostedServiceConsole user=DL\john.smith
netsh http add urlacl url=http://+:8732/Design_Time_Addresses/SampleService/Service1 user=DL\john.smith
```

Fig.4. Permissions for starting WCF service

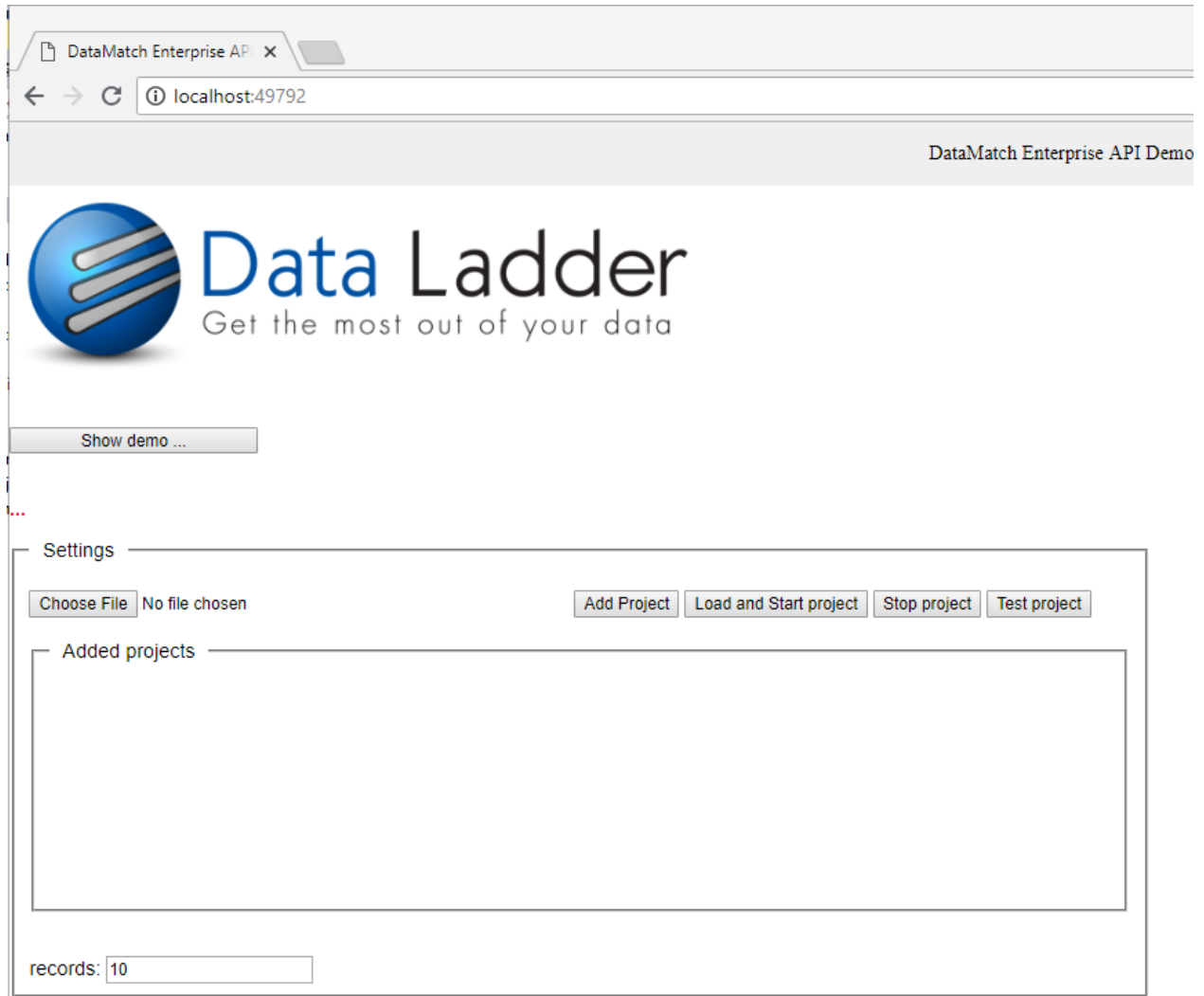


Fig.5

6. Please click "Choose File" button and select DME project created in point 3. Then click "Add Project", choose radio button and after that click "Load and Start project". Started project is shown below (Fig.6)

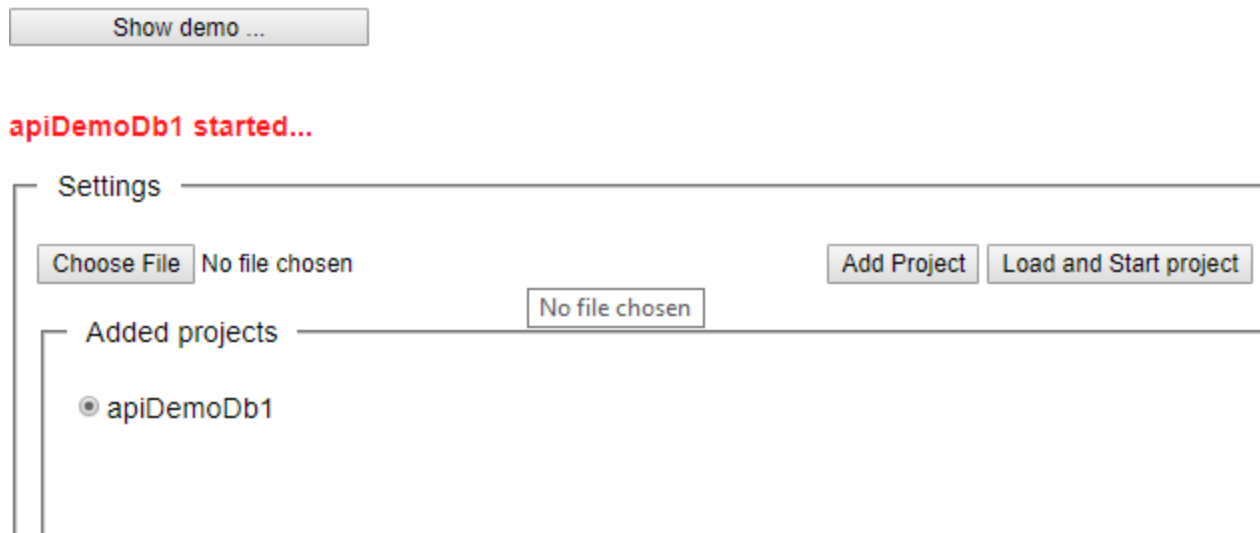


Fig.6 Started project

After the project is loaded you can go to real-time examples: Live Search and Suppressing Management by pressing 'Show demo...' button.


For inserting a new record into the database, you should type values in text fields in the section Fields and then press button 'Write'. If a record is unique it will be inserted. Also, you can change values of thresholds.

DataMatch Enterprise API Demo

localhost:49792

AppsPMRimScoutT1C#RWorkhtmlMLsmithdocker/labsspecsVer HistoryRS

DataMatch Enterprise API Demo 3.3.9 (1.1.0)



Data Ladder

Get the most out of your data

Show settings ...

projectSql started...

Fields

Contact First Name

vid

Contact Last Name

smith

Tresholds

Auto Match

95

Manual

60

Set tresholds

Live Search: ☒

Write


Search

Response time (vic, smith): 0 sec 70 ms

Group ID	Data Source	Record	Matching Record	Score	Contact First Name score	Contact Last Name score	score 1	s 1	Company Name	Industry	Address	City	State	ZIP	Contact First Name	Contact Middle Initial	Contact Last Name	Pl
1	0	1286	0	86.6666667163372	73.3333334326744	100	86.6666667163372	True	Smith RL Trucking	Trucking	232 Frankie Ln	pINE BLUFF	AR	71602-2699	Vivian		Smith	(1, 22 28

Fig.7 Duplicate for entered values

DataMatch Enterprise API Demo 3.3.9 (1.1.0)



Data Ladder

Get the most out of your data

Show settings ...

...

Fields

Contact First Name

Contact Last Name

Thresholds

Auto Match

Manual

Live Search: ☒

Number of possible duplicates: 1. Do you want write this record in any case?

Group ID	Data Source	Record	Matching Record	Score	Contact First Name score	Contact Last Name score	score 1	s 1	Company Name	Industry	Address	
1	0	1286	0	86.6666667163372	73.3333334326744	100	86.6666667163372	True	Smith RL Trucking	Trucking	232 Frankie Ln	pl BL

Fig.8 Duplicate has the score between thresholds that's why the application ask should this record be inserted in the database